



incharge

unified call management

InCharge Unified Call Management is a powerful web based reporting solution that can generate detailed or summary management reporting on your PBX and mobile communications usage.

This solution can be deployed in various general business environments and institutions such as hospitals, universities, government facilities or any business wanting to allocate Telecom and Wireless costs to departments, cost centres or individuals. InCharge can also be used to allocate equipment charges and monitor telephone usage and user productivity.

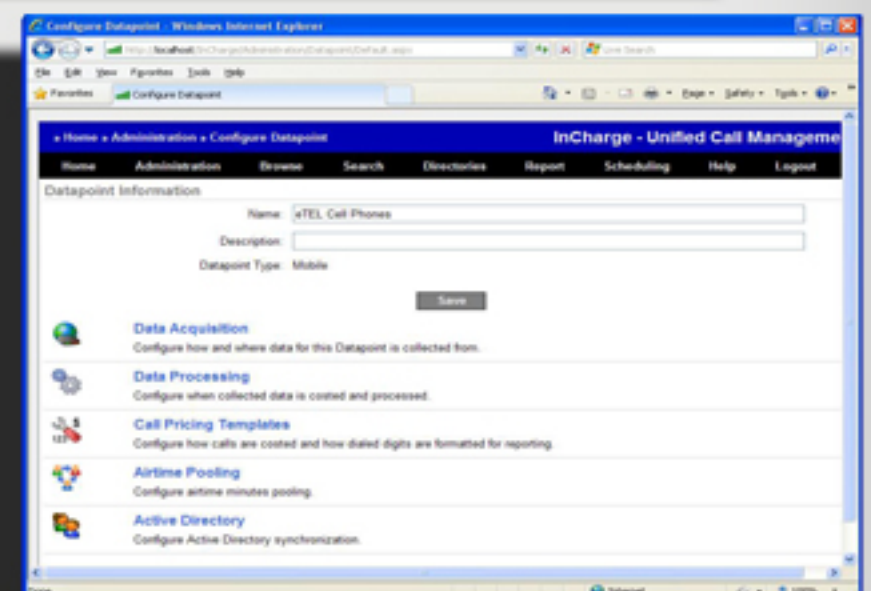
InCharge is a true web-based application and can be accessed from any desktop within your network, VPN, or remote office, making accessibility convenient and fast. Data is stored internally in an embedded MySQL database for easy retrieval and virtually unlimited storage.

Advanced Features include:

- Supports all major PBX types & Wireless Carriers
- Fully web based
- Automated Enterprise report distribution
- Comprehensive suite of boardroom ready reports
- Tiered user privileges
- Scalable database
- Buffer box or bufferless CDR collection
- Administrative tools and analysis capability
- Ad-hoc reporting, data search and export capability

Benefits:

- Create end user visibility & accountability
- Control costs by identifying waste and abuse
- Consolidated view of landline and wireless
- Information at your fingertips saves time and money





incharge

unified call management

InCharge Unified Call Management can interface with most cellular carriers in the market today. Some supported carriers are:

Rogers Wireless • Bell Mobility • Telus Mobility • T-Mobile • Verizon Wireless

InCharge provides a powerful portfolio of reports that enable users to concentrate their efforts on making management decisions instead of wrestling with the data. These reports, combined with a variety of relevant filters, allow you to view the data quickly and efficiently, revealing areas of usage and behavior not readily apparent from your invoices. With its many pre-defined and ad-hoc reporting options, InCharge is sure to have just the report you need. Fully integrated reports can also be developed to suit your needs to output in a variety of different formats such as PDF, Word and Excel.



Some examples of wireless data reports are:

- Abandoned Devices
- Top Users by Bill Period
- High Average Voice/Data Users
- Non-Voice Charges by Device
- Zero Usage Devices
- Rate Plan Summary
- Daily Voice Usage (graphs)
- Monthly Analysis Report

SYSTEM REQUIREMENTS:

The InCharge Server components require a PC compatible system with a minimum:

- 1 gigabyte RAM
- 2.0Ghz CPU speed
- 20 Gb of available disk space (additional space may be required depending on data storage requirements)
- 1024x768 pixel - 256 colour video
- CD-ROM drive
- Windows Server 2000/2003/2008/2008 R2 or later with:
- 4.0 .NET Framework (provided with install CD)
- IIS 5.0 or later
- MySQL 5.0 (provided with installation CD)

Name	Device	Rate Plan	Datapoint	Total Airtime Charges	Minutes Used	Monthly Average Cost/Minute
Exart, Al	9052690246 Cell		eTEL Cell Phone	\$135.79	855	\$0.16
Khng, Reg	9051977814 Cell		eTEL Cell Phone	\$49.60	366	\$0.14
Creskany, David	9059541514 Cell		eTEL Cell Phone	\$54.16	821	\$0.11
Arbun, Glen	9054903032 Cell		eTEL Cell Phone	\$59.64	595	\$0.10
Norm, Gill	9058438816 88-V		eTEL Cell Phone	\$55.42	593	\$0.09
Mickleland, David	9054141201 Cell		eTEL Cell Phone	\$72.26	777	\$0.09
Evans, Gary	9056072216 88-V		eTEL Cell Phone	\$44.33	478	\$0.09
Griffin, Cam	9052193034 Cell		eTEL Cell Phone	\$104.29	1,129	\$0.09
Foster, Ross	9058157090 Cell		eTEL Cell Phone	\$65.43	710	\$0.09
Ocean, Trenton	9058539008 Cell		eTEL Cell Phone	\$117.08	1,303	\$0.09
Ferguson, Ehar	9056641929 88-V		eTEL Cell Phone	\$80.45	896	\$0.09
Urbanek, Robert	9050199582 Cell		eTEL Cell Phone	\$54.38	610	\$0.09
O'grady, Glen	9058700884 Cell		eTEL Cell Phone	\$49.97	568	\$0.09
Demather, Scott	9057340094 Cell		eTEL Cell Phone	\$57.40	655	\$0.09
Stewart, Warren	9054400414 Cell		eTEL Post Phone	\$49.48	non	\$0.09



eTEL Technologies
5925 Airport Rd
Mississauga, ON
L4V 1W1

T. 905-405-6216
F. 905-332-6509

sales@eteltech.com
www.eteltech.com